

THE SANDMAN

BEER

THIRD STREET ALEWORKS \$9
Seasonal Selection – 16oz can

THIRD STREET ALEWORKS \$8
Seasonal Selection – 16oz draft

GOLDEN STATE CIDER \$9
Ginger Lemongrass, Mighty Dry or Hamaica
16oz can

TOPO CHICO SELTZER \$7
Various flavors - 12oz can

COORS LIGHT \$6
16oz can

CORONA EXTRA \$6
12oz can

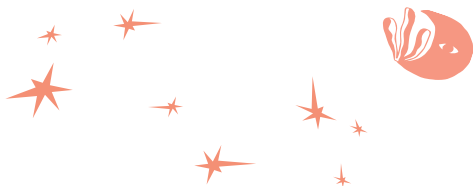
MODELO \$5
12oz can

WINE BY THE CAN

MUMM NAPA
Brut Prestige \$10

SOFIA
Blanc de Blancs \$8

HOUSE WINES
Pinot, Sangria, Paloma or Sauvignon Blanc \$8



REFRESHMENTS

SOULSTICE ICED TEA \$5
Blood Orange Hibiscus

TOPO CHICO \$4
Sparkling Mineral Water

WINE BY THE GLASS

ARMIDA
Zinfandel \$8 glass \$32 bottle

AVA GRACE
Sauvignon Blanc \$8 glass \$32 bottle
Rose \$8 glass \$32 bottle

PRESCRIPTION
Chardonnay \$8 glass \$32 bottle
Cabernet Sauvignon \$9 glass \$38 bottle

LLOYD CELLARS
Chardonnay \$10 glass \$42 bottle
Pinot Noir \$12 glass \$60 Bottle

COCKTAILS



SONOMA MULE \$12
Red Jardesca, Ginger Beer & Lime

WINE-A-RITA MARGARITA \$12
Agave Wine, Sweet & Sour, Fresh Lime

BLOOD ORANGE MARGARITA \$12
Sabe Blanco, Blood Orange Juice and Sweet and Sour Mix
topped with a Lime

SEAN'S MAIN SQUEEZE \$12
Sabe Straight, Sparkling Lemonade topped with a Lemon

COPPER AND COLA \$12
Sabe Copper and cola with a fresh lime

WARNING: Certain foods and beverages sold or served here can expose you to chemicals including acrylamide in many fried or baked foods and mercury in fish, which are known to the State of California to cause cancer and birth defects or other reproductive harm. For more information go to www.P65Warnings.ca.gov/restaurant